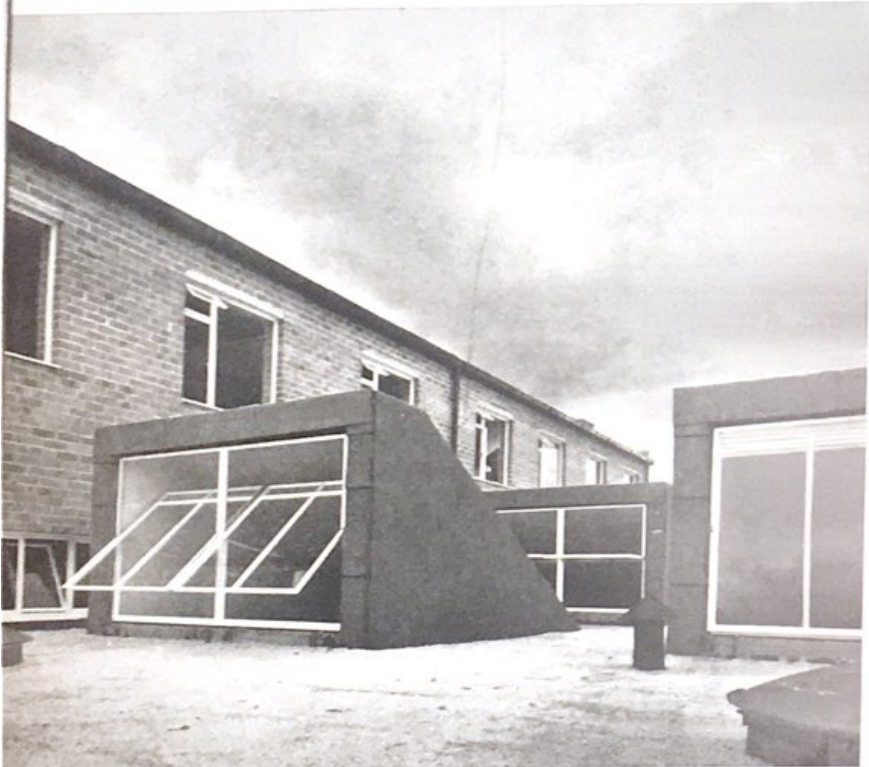


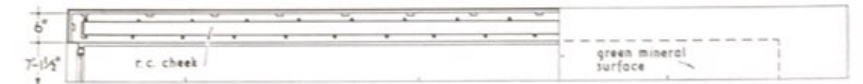
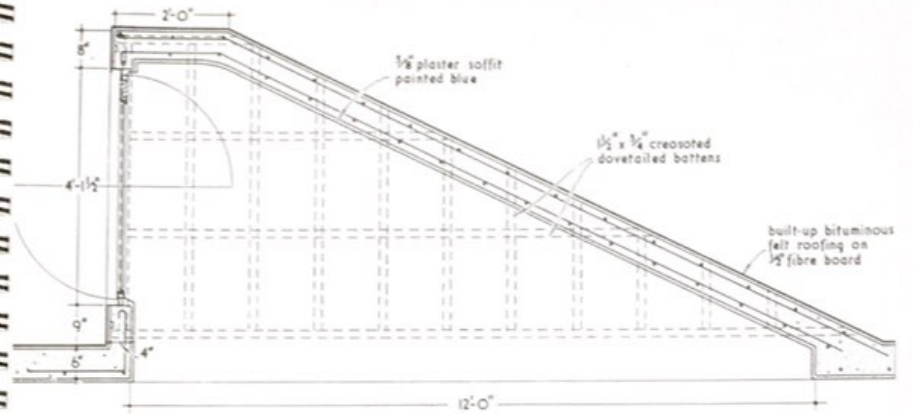
WINDOWS

ROOFLIGHT: WHOLESALE GROCERY DEPOT AT DORCHESTER  
 DESIGNED BY CECIL H. ELSOM AND R. NICHOLLS (architect and chief assistant);  
 S. H. AND D. E. WHITE (consulting engineers)

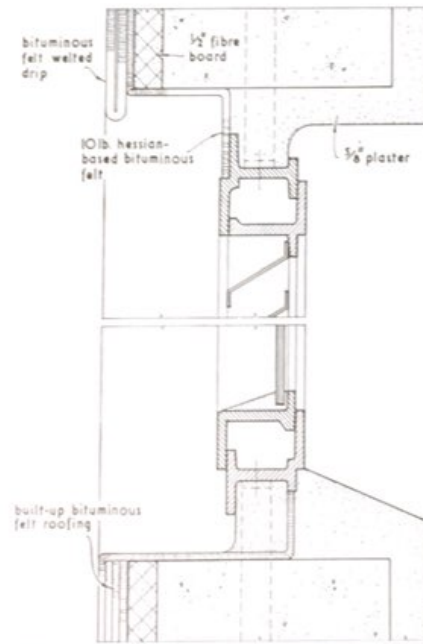
The top and cheeks of the north light structure are cast in one with the roof slab.



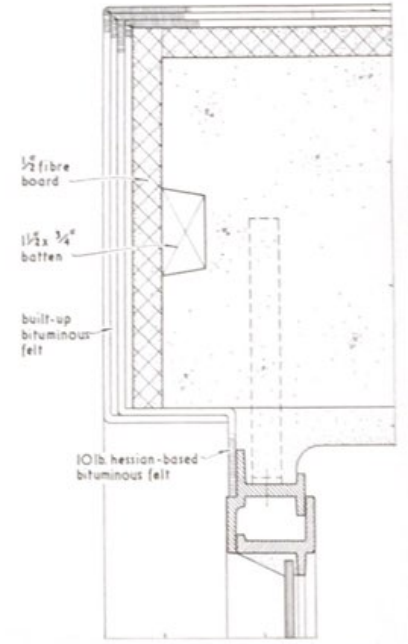
WINDOWS



LONGITUDINAL SECTION AND PART PLAN THRO' CHEEK. scale 1/2" = 1'-0"



DETAIL OF HEAD AND CURB scale 1/2 full size



DETAIL OF CHEEK. scale 1/2 full size